

## Will County Building/Location Summary

- 1) **County Office Building**  
302 North Chicago Street, Joliet, IL
- 2) **Animal Control**  
22452 Cherry Hill Road, Joliet, IL
- 3) **Emergency Management**  
22456 Cherry Hill Road, Joliet, IL
- 4) **Sunny Hill Nursing Home**  
421 Doris Avenue, Joliet, IL
- 5) **Health Department**  
501 Ella Avenue, Joliet, IL
- 6) **Community Health Clinic**  
1106 Neal Avenue, Joliet, IL
- 7) **Records Management**  
806 Nicholson Street, Joliet, IL
- 8) **Recorder of Deeds**  
158 North Scott Street, Joliet, IL
- 9) **Child Advocacy**  
304 North Scott Street, Joliet, IL
- 10) **Public Safety Complex**  
16911 Laraway Road, Joliet, IL
- 11) **Courthouse (new)**  
100 West Jefferson Street, Joliet, IL
- 12) **Parking Lot A (Courthouse)**  
Washington Street & Joliet Street, Joliet, IL
- 13) **Parking Lot B (Courthouse)**  
Washington Street & Ottawa Street, Joliet, IL
- 14) **Parking Lot C (Courthouse)**  
Ottawa Street & Marion Street, Joliet, IL
- 15) **Parking Lot D (Courthouse)**  
Jefferson Street & Chicago Street, Joliet, IL
- 16) **Courthouse (old)**  
14 West Jefferson Street, Joliet, IL
- 17) **River Valley Juvenile Center**  
3200 W. McDonough Street, Joliet, IL
- 18) **Silver Cross Building**  
1300 Copperfield, Joliet, IL
- 19) **Adult Detention Facility**  
95 South Chicago Street, Joliet, IL

# #1) COUNTY OFFICE BUILDING



COUNTY OFFICE BUILDING





## #4) SUNNY HILL NURSING HOME



SUNNY HILL NURSING HOME



# #6) COMMUNITY HEALTH CLINIC



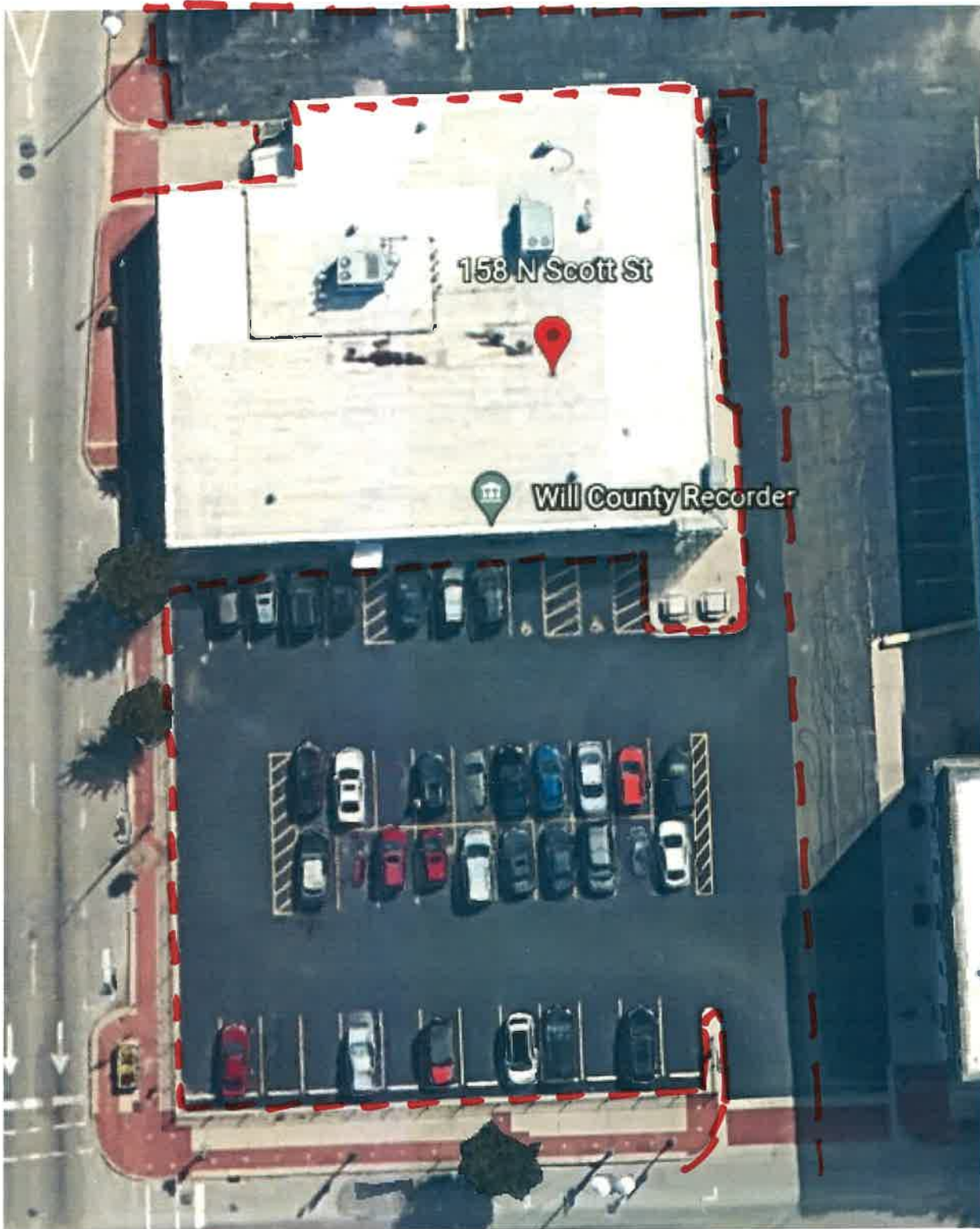
COMMUNITY HEALTH CLINIC

# #7) RECORDS MANAGEMENT



RECORDS MANAGEMENT

# #8) RECORDER OF DEEDS



RECORDER OF DEEDS

# #9) CHILD ADVOCACY



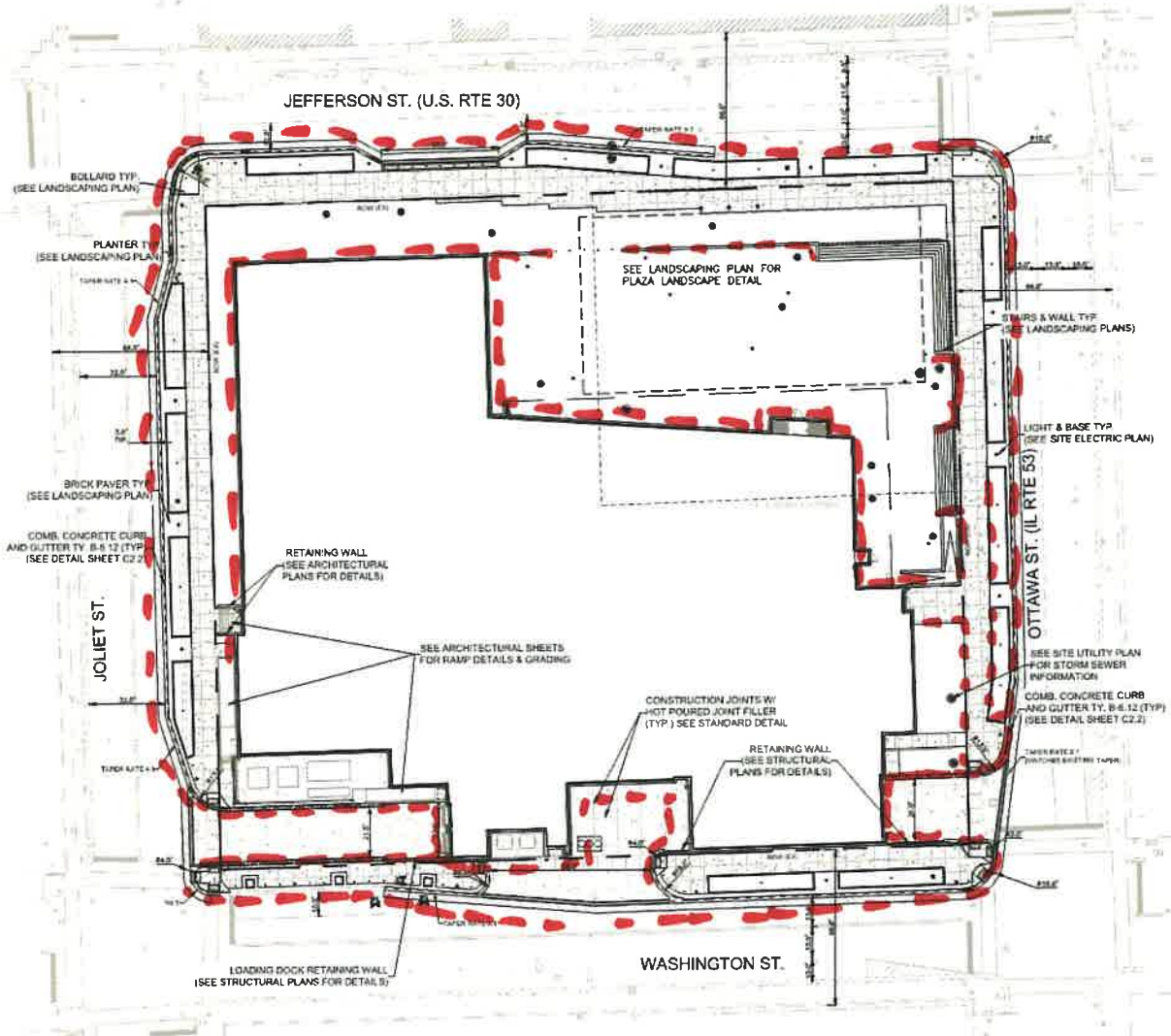
CHILD ADVOCACY

# #10) PUBLIC SAFETY COMPLEX



PUBLIC SAFETY COMPLEX

# #11) WILL COUNTY COURTHOUSE (NEW)



# #12) PARKING LOT A (Courthouse)



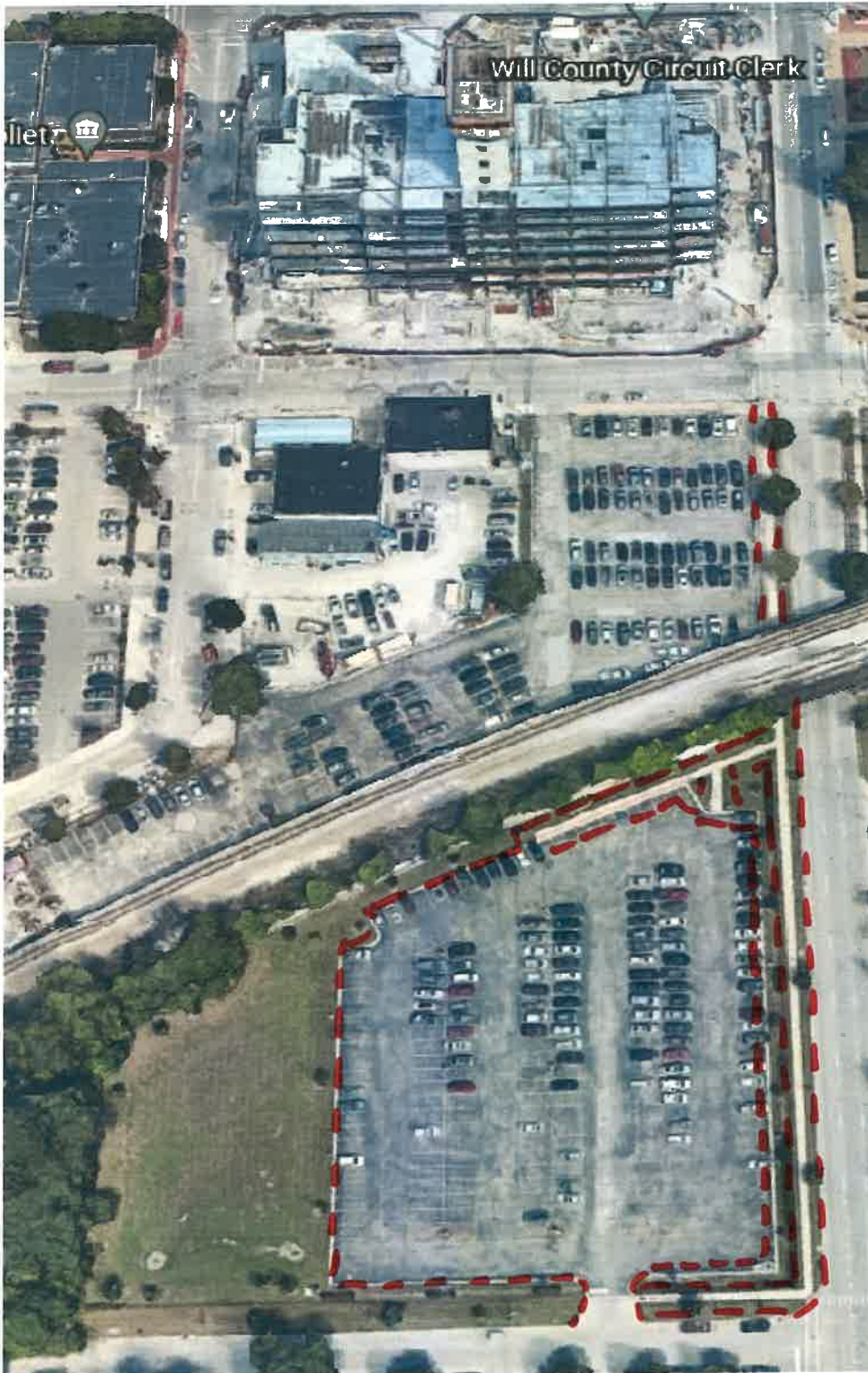
PARKING LOT A (Courthouse)

# #13) PARKING LOT B (Courthouse)



PARKING LOT B (Courthouse)

# #14) PARKING LOT C (Courthouse)



PARKING LOT C (Courthouse)

# #15) PARKING LOT D (Courthouse)



PARKING LOT D (Courthouse)

# #16) WILL COUNTY COURTHOUSE (OLD)



WILL COUNTY COURTYHOUSE (OLD)

# #17) RIVER VALLEY JUVENILE CENTER



RIVER VALLEY JUVENILE CENTER

# #18) SILVER CROSS BUILDING



SILVER CROSS BUILDING

# #19) ADULT DETENTION FACILITY

